

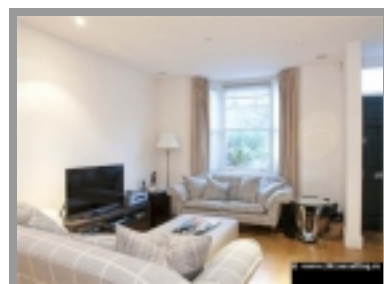
Fullerton Road - wonderful house, London, Wandsworth

Beautiful and spacious 4 bedroom family home in a traditional English style, but inside has been repaired and now is ver modern and luxury home.

The area is perfect for married couples and families with children. Different restaurants with varied menus, cafes, shops, shopping centers and small private shops are near the property. Within walking distance of the River Thames and water channels, which makes the area much more attractive. As well, there are many schools, kindergardens, colleges, spa and beauty salons. For those who are fond of sport, there is a park for jogging and gym,as well as a fitness center. Health centers within walking distance.The area is quiet and green.

- ID: **581**
- Country: **United Kingdom**
- Region: **London**
- Number of rooms: **5**
- Price: **£900000**

☒ **Rent**



- On the ground floor you can find a large open living room with wooden floors and a large window. Very spacious and beautiful kitchen with white goods included. Bright, very comfortable dining room. Kitchen opens directly into the garden with stone floors
- On the first floor there are three double bedrooms, one of which has fitted wardrobes and a family bathroom. Each bedroom floors are covered with a light soft carpet. Large windows allow you to enjoy natural light most of the day
- On the second floor there is large double bedroom and a bathroom


Specifications:

- Kitchen / dining room
- Two living rooms
- Four bedrooms
- Two bathrooms / shower
- Wardrobe
- Garden


The house is perfect for living and for the rental purposes.Perfect location, amazing views, beautiful area. Train station in a few minutes from home as well as underground Bus services and taxi as an



www.UKconsulting.ru

 +7 (495)-649-6922

info@ukconsulting.ru

 +44 7853-137-137

alternative for any occasion.



«DOM-INFO LTD», 145 - 157 St John St, EC1V 4PY, London, United Kingdom reg. N 06922947

© www.UKconsulting.ru – Independent Consulting Group: England, Russia, CIS, EU, USA, ASIA